

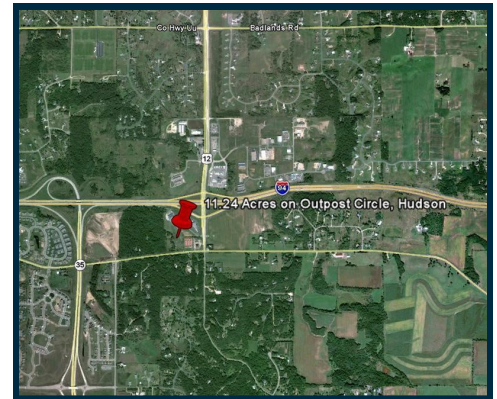
For Sale

**Commercial Land
\$200,000**

- Commercial Land Off Exit 4
- Lot 8 Available—2.09 Acres
- Commercial Zoning
- Freeway Visibility
- Growing Hudson Market
- PRICED RIGHT!!!



**Outpost Circle
Hudson, WI**



For more information contact:

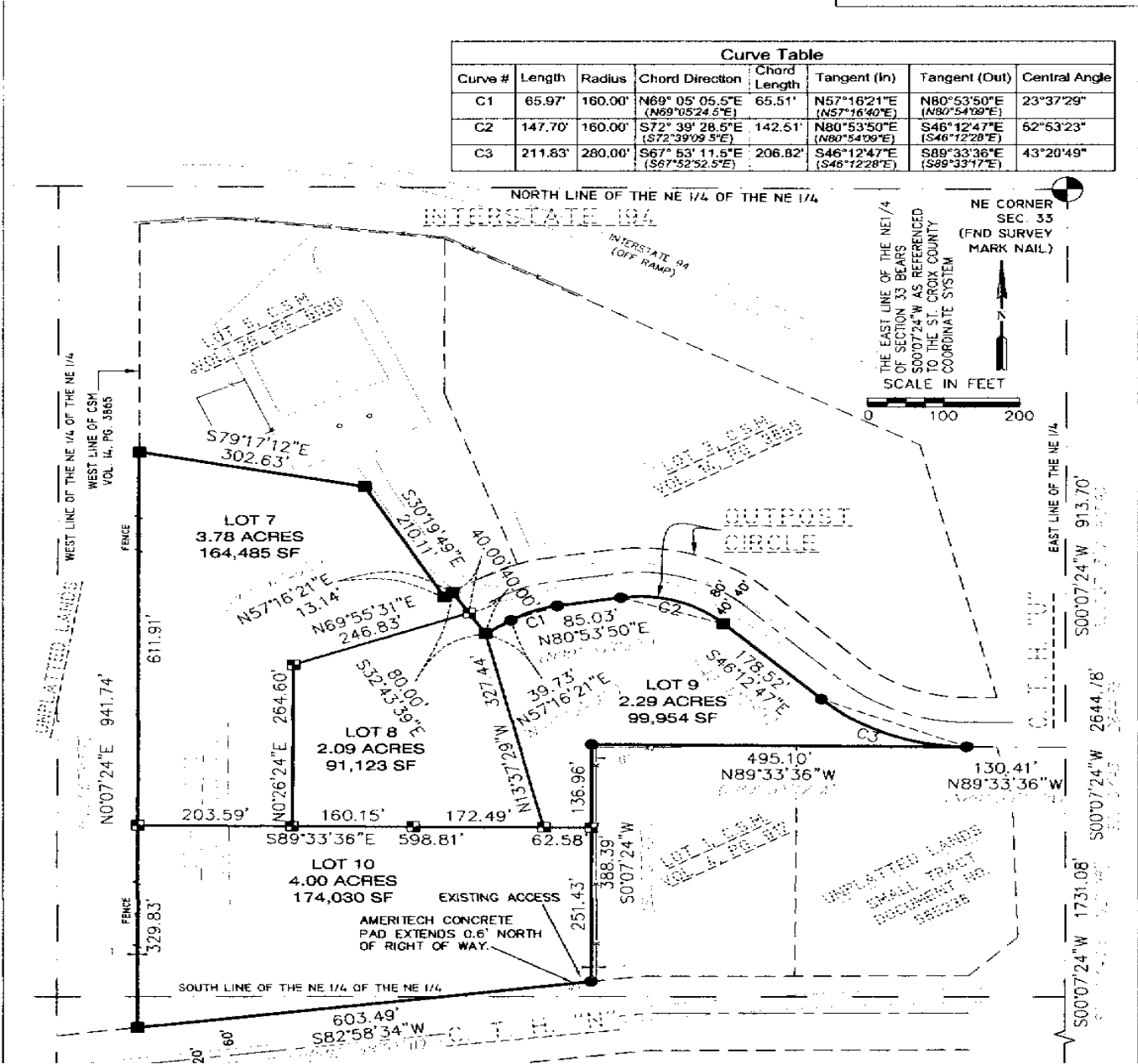
Kevin J. LaCasse
651.430.2024 office
651.216.4858 mobile
651.430.2480 fax
klacasse@greystone-commercial.com

Outpost Circle

CERTIFIED SURVEY MAP

LOCATED IN PART OF THE NE 1/4 OF THE NE 1/4 AND SE 1/4 OF THE NE 1/4 OF SECTION 33, T29N, R19W, TOWN OF HUDSON, ST. CROIX COUNTY, WISCONSIN, BEING LOT 6 OF A CERTIFIED SURVEY MAP RECORDED IN VOLUME 26, PAGE 6030 AT ST. CROIX COUNTY REGISTER OF DEEDS OFFICE.

Curve Table							
Curve #	Length	Radius	Chord Direction	Chord Length	Tangent (In)	Tangent (Out)	Central Angle
C1	65.97'	160.00'	N89° 05' 05.5"E (N69° 05' 24.5"E)	65.51'	N57° 16' 21"E (N57° 16' 40"E)	N80° 53' 50"E (N80° 54' 09"E)	23° 37' 29"
C2	147.70'	160.00'	S72° 39' 28.5"E (S72° 39' 09.5"E)	142.51'	N80° 53' 50"E (N80° 54' 09"E)	S46° 12' 47"E (S46° 12' 28"E)	52° 53' 23"
C3	211.83'	280.00'	S67° 53' 11.5"E (S67° 52' 52.5"E)	206.82'	S46° 12' 47"E (S46° 12' 28"E)	S89° 33' 36"E (S89° 33' 17"E)	43° 20' 49"



Land Layout

The information contained herein has been provided by the property owner or obtained from sources deemed reliable. Although the information is believed to be accurate, it is not guaranteed. The property is subject to price change, prior sale or lease and withdrawal from the market, without notice. Buyer is responsible to conduct its own due diligence, as this offering contains no representations or warranties.